

# MELO Y EL RIO

P.SANGUINETTI

TANGO  $\text{♩} = 80$

INTRO PIANO 6 C.



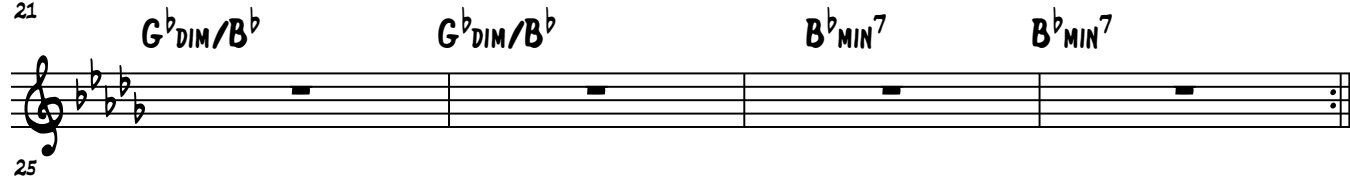
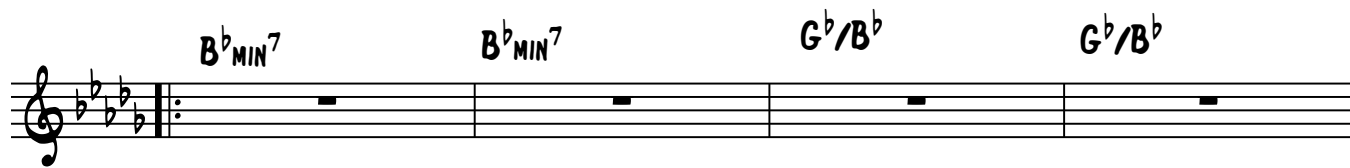
PUENTE



Rit. (PARA FINAL)

F7(4+) FIN

IMPRO



D. C. AL FINE

INTRO PIANO 6 C. - ABAB PUENTE IMPRO PUENTE AB PUENTE FIN