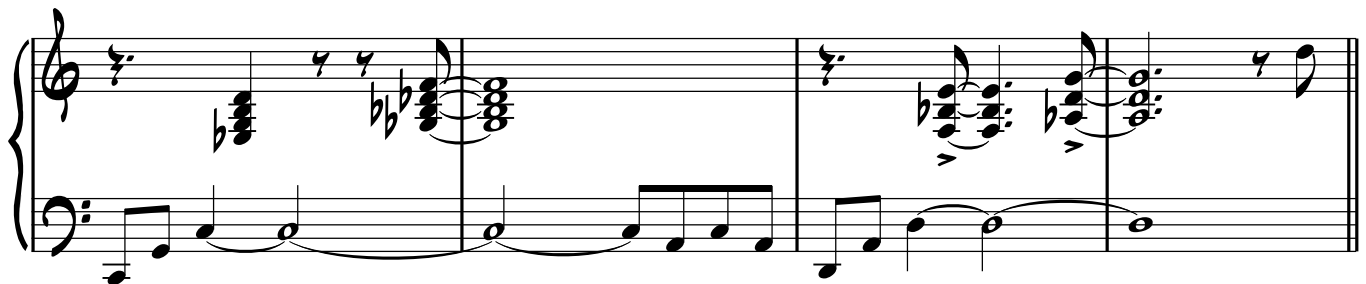
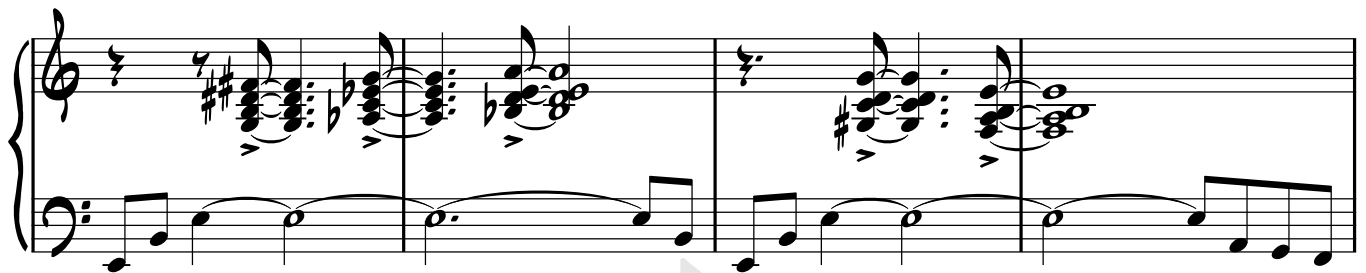
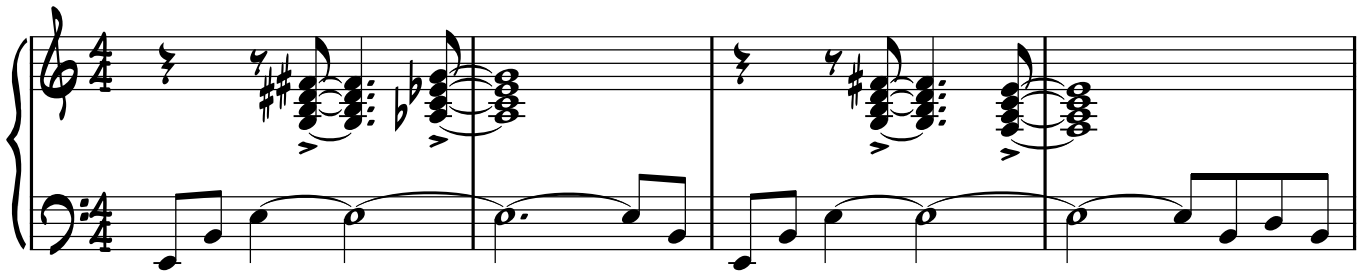


Misterioso

Nicolás Guerschberg

INTRO



A



First system of piano accompaniment. The right hand features a melodic line with eighth and sixteenth notes. The left hand provides a harmonic foundation with chords and moving lines. Chord labels include D-9(#5) and C#-9.

Second system of piano accompaniment. The right hand includes a trill (tr) and various rests. The left hand continues with harmonic support. A repeat sign (double bar line with dots) is present.

Third system of piano accompaniment. The right hand has a melodic line with a trill. The left hand features chords and moving lines. Chord labels include C-9(+5) and B-9. A watermark for www.realbookargentina.com is visible.

Fourth system of piano accompaniment. The right hand includes a trill. The left hand features chords and moving lines. Chord labels include Bb-9, B-9(#5), D-9(#5), F-9(#5), and A-9(#5). A repeat sign is present.

Fifth system of piano accompaniment, labeled 'B'. It contains two endings: '1.' and '2.'. The right hand features chords and moving lines. The left hand provides harmonic support.

Sixth system of piano accompaniment. The right hand features a melodic line with eighth and sixteenth notes. The left hand provides harmonic support with chords and moving lines.



SOLOS (Abiertos)

hasta el CUE

(VAMP p/Solo de Batería)

