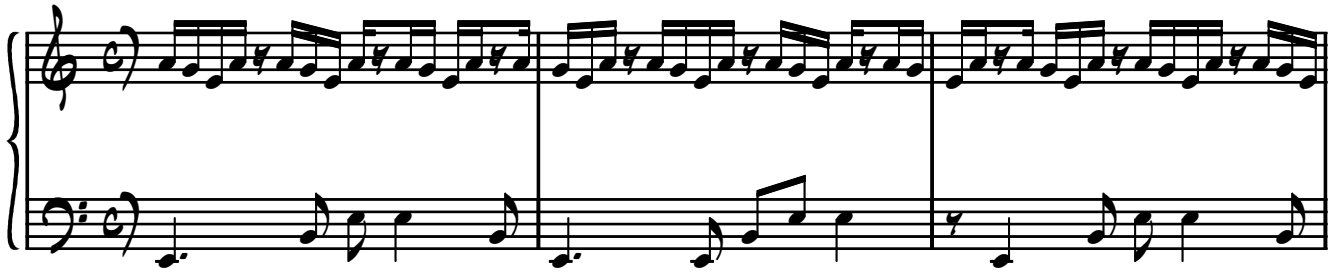


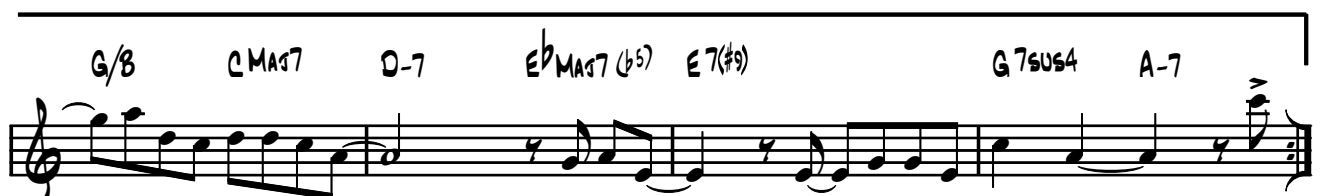
Lucano

Martín Porto

INTRO




A



2.

A-7 B^bMA7(♯11) G/B CMA7 D-7 E^bMA7(♯11) E7(♯9)



The musical notation for exercise 2 is written on a single staff in treble clef with a common time signature (C). The melody consists of eighth and quarter notes. Above the staff, the following chords are indicated: A-7, B^bMA7(♯11) G/B, CMA7, D-7, E^bMA7(♯11), and E7(♯9). The notation shows a sequence of chords and a corresponding melodic line.

G7sus4 A- (N.C.) (A-7 G#° D/F# F/G)

[illegible]

D.C. (Intro x2 y sigue)

A-7 G/B E-7 A-7 B7 Bb7(#11) A-7 BbMaj7

G/B CMA7 D-7 E^bMA7(♯11) E7(♯9) G7sus4 A-

www.realbookargentina.com