

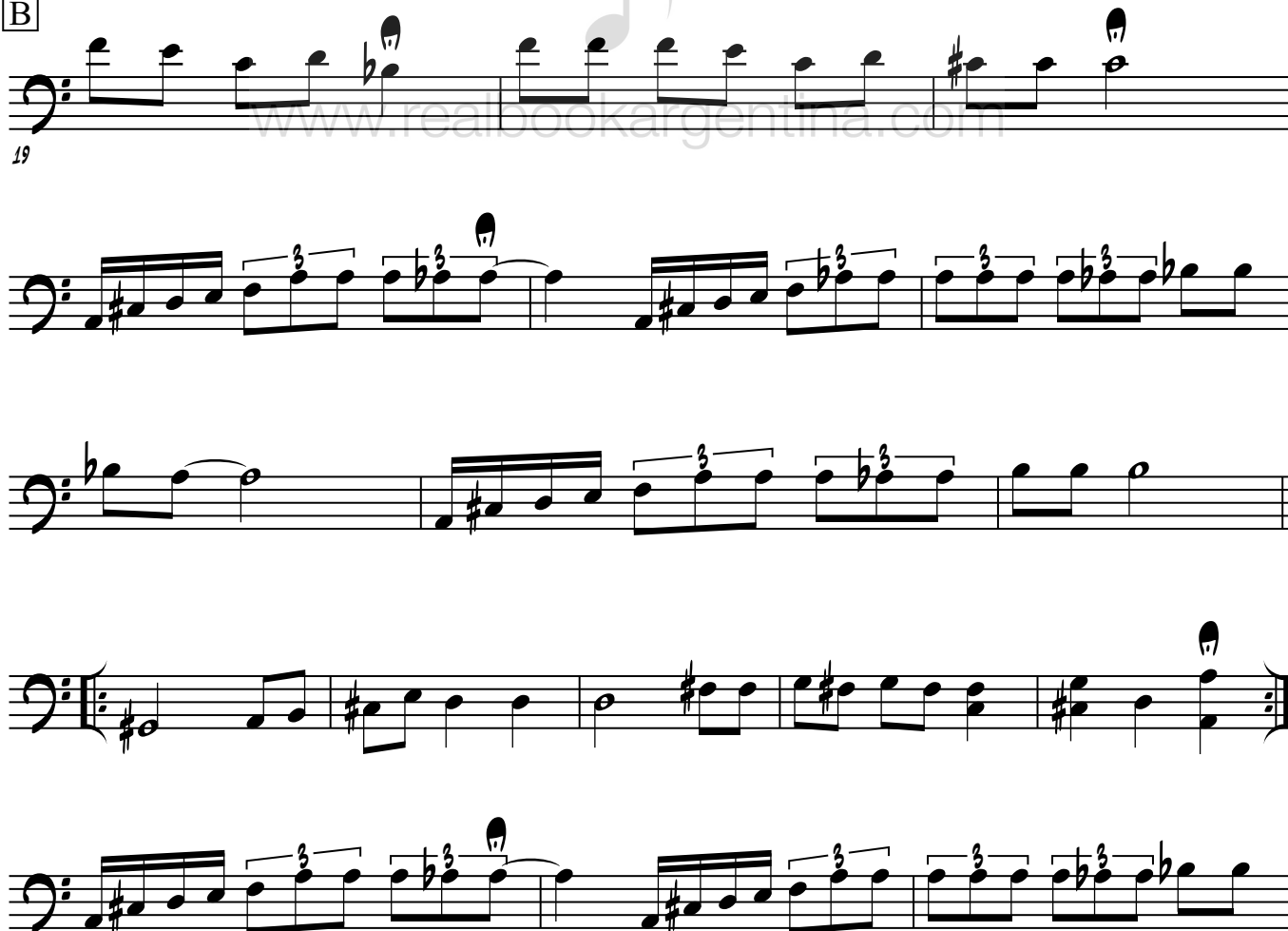
Gouáp

Gabo Cuman

A



B



The musical notation for the bass line of 'El Choro' is shown on a single staff. It begins with a bass clef and a 4/4 time signature. The first measure is a whole note chord (F4, A4, C5). The second measure is a half note chord (F4, A4, C5). The third measure is a half note chord (F4, A4, C5). The fourth measure is a half note chord (F4, A4, C5). The fifth measure is a half note chord (F4, A4, C5). The sixth measure is a half note chord (F4, A4, C5). The seventh measure is a half note chord (F4, A4, C5). The eighth measure is a half note chord (F4, A4, C5). The ninth measure is a half note chord (F4, A4, C5). The tenth measure is a half note chord (F4, A4, C5). The eleventh measure is a half note chord (F4, A4, C5). The twelfth measure is a half note chord (F4, A4, C5). The thirteenth measure is a half note chord (F4, A4, C5). The fourteenth measure is a half note chord (F4, A4, C5). The fifteenth measure is a half note chord (F4, A4, C5). The sixteenth measure is a half note chord (F4, A4, C5). The notation is divided into two sections by a double bar line. The first section is labeled '(falsos armonicos)' and the second section is labeled '(a tempo, rápido)'. The first section contains measures 1 through 8, and the second section contains measures 9 through 16.

(falsos armónicos)

(a tempo, rápido)



(tocar libre, luego de C, impro)