

# Una cancion para Agustin

## Medium Samba

F.Keoroglanian

## Introduccion

1 Introduccion

The image shows the first measure of the introduction for 'El Condor Pasa'. It is written in 4/4 time with a key signature of one flat (Bb). The melody is in the treble clef, starting on a whole note G4, followed by a half note F#4, and then a half note E4. The bass line is in the bass clef, starting on a whole note G3, followed by a half note F#3, and then a half note E3. The piece is marked 'Introduccion'.

9

1.

The image shows a musical score for the song 'The Rose Tree'. It features a treble clef, a key signature of one flat (B-flat), and a common time signature (C). The score is divided into two systems. The first system contains a single measure with a whole note G4, followed by a double bar line with repeat dots. The second system contains a single measure with a whole note G4. The lyrics 'The Rose Tree' are written below the first system, and 'The Rose Tree' is written below the second system. The number '9' is written above the first measure of the first system.

14

A F

Gm7 Gb

1. Gm7 Gb

www.realbookargentina.com

Musical score for the piece 'B' (Bach). The score is written for a single melodic line on a treble clef staff. The key signature is one flat (B-flat). The tempo/mood is marked 'Andante'. The score begins with a measure number of 18. The melody is composed of eighth and sixteenth notes, often beamed together. Chord symbols are placed above the staff: Gm7, Gb, Bb, Bbm7, Bb, Bbm7, Am7, and E7. A large, faint watermark 'RealBookArgentina' is visible across the center of the page.

22

Gm7 C7 F6

Ponte

1.

26

C

Bb Gm7 Bb Gm7

30

Am

1.

Am

34

38

42

A F

Solos sobre A y B (opcionales)

Gm7 Gb

46

Gm7 Gb

1. Gm7 Gb Bb Bbm7 Bb Bbm7

50 Am7 E7 Gm7 C7 F6

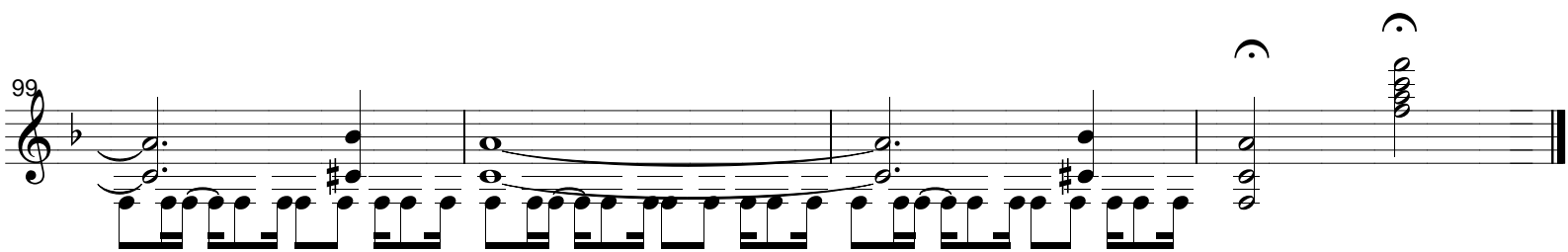
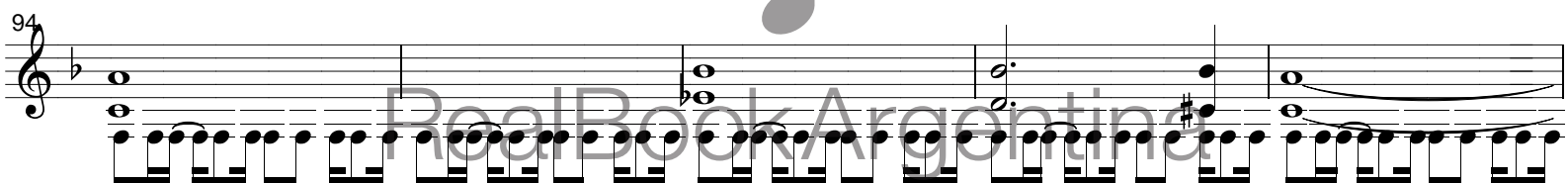
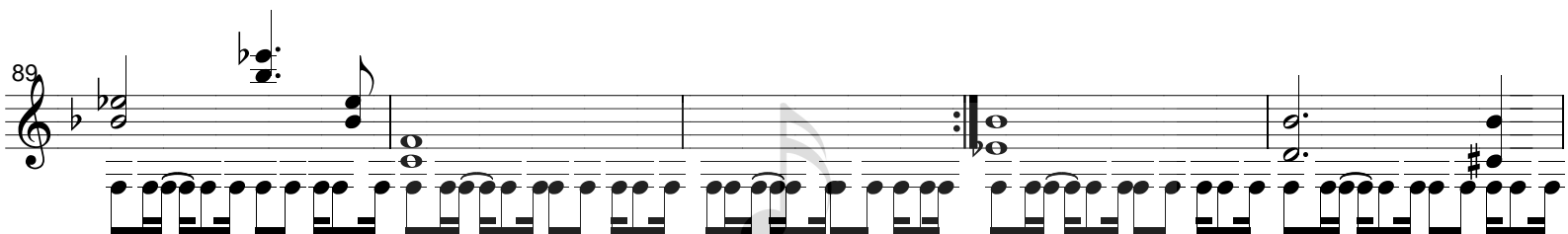
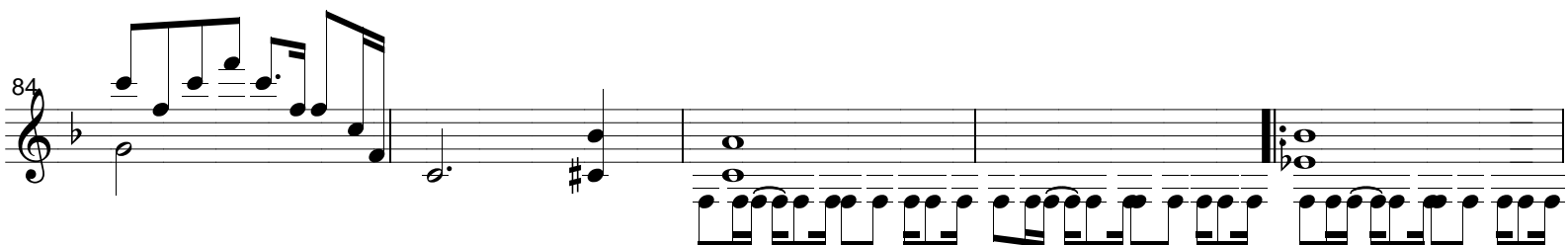
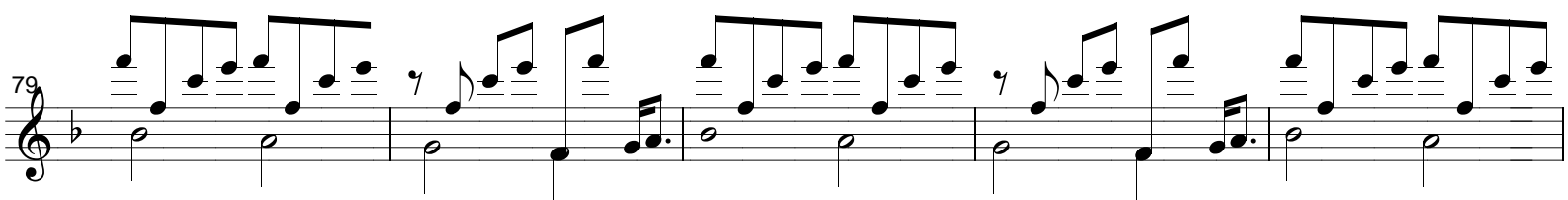
54 F6 1.

59 Bb Gm7 1.

64

69

74



*ri*  
*t.*

[www.realbookargentina.com](http://www.realbookargentina.com)