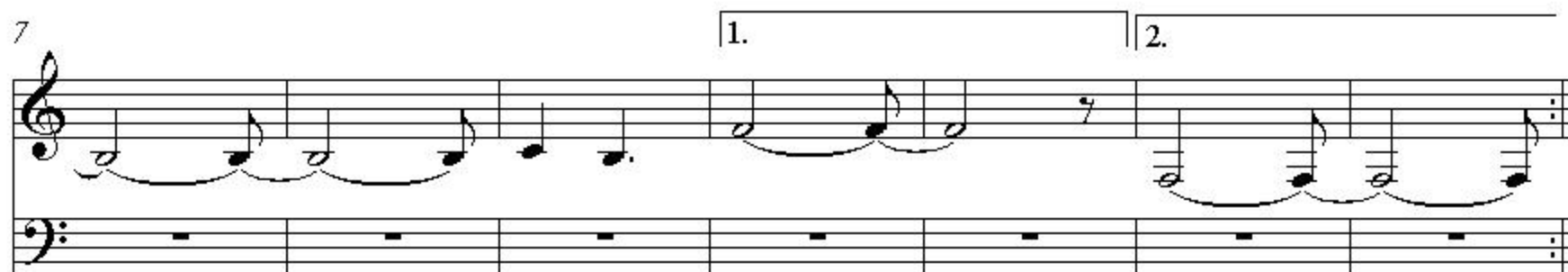


Amable

Intro

Pablo Butelman

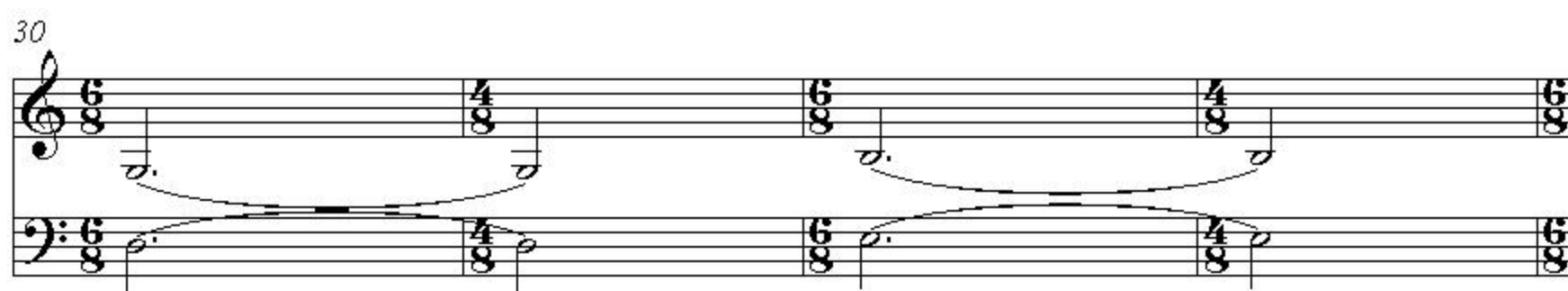
(2+3)



A



B



A' 2

46

Measures 46-49: Treble and bass staves in 5/8 time. The melody consists of eighth and quarter notes, mostly on a single pitch with some movement in the bass line.

50

Measures 50-53: Treble and bass staves in 5/8 time. The melody continues with eighth and quarter notes. Measures 52 and 53 end with a double bar line and repeat signs.

54

Measures 54-57: Treble and bass staves in 5/8 time. The melody continues with eighth and quarter notes. Measures 56 and 57 end with a double bar line and repeat signs.

58

Measures 58-61: Treble and bass staves in 5/8 time. Measure 59 features a half note in the treble staff. Measures 60 and 61 end with a double bar line and repeat signs.

www.realbookargentina.com

B

62

Measures 62-65: Treble and bass staves in 6/8 time. Measures 62 and 63 feature a half note in the treble staff. Measures 64 and 65 end with a double bar line and repeat signs.

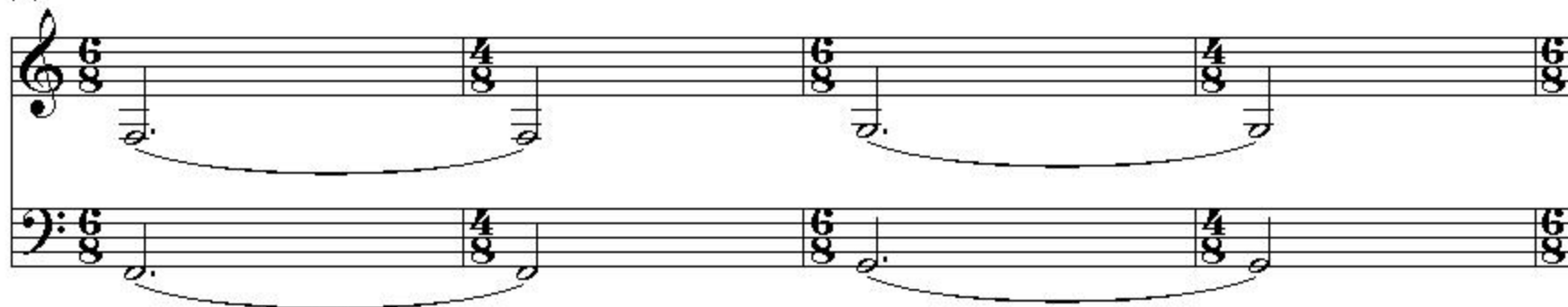
66

Measures 66-69: Treble and bass staves in 6/8 time. Measures 66 and 67 feature a half note in the treble staff. Measures 68 and 69 end with a double bar line and repeat signs.

70

Measures 70-73: Treble and bass staves in 6/8 time. Measures 70 and 71 feature a half note in the treble staff. Measures 72 and 73 end with a double bar line and repeat signs.

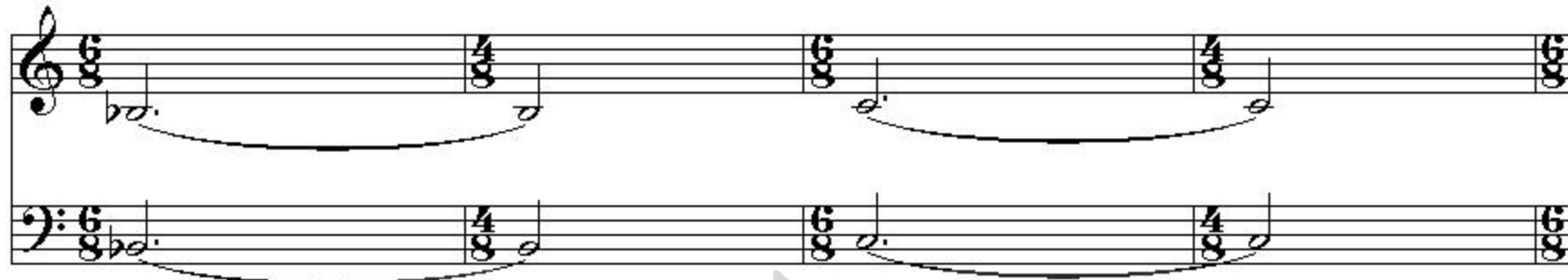
74



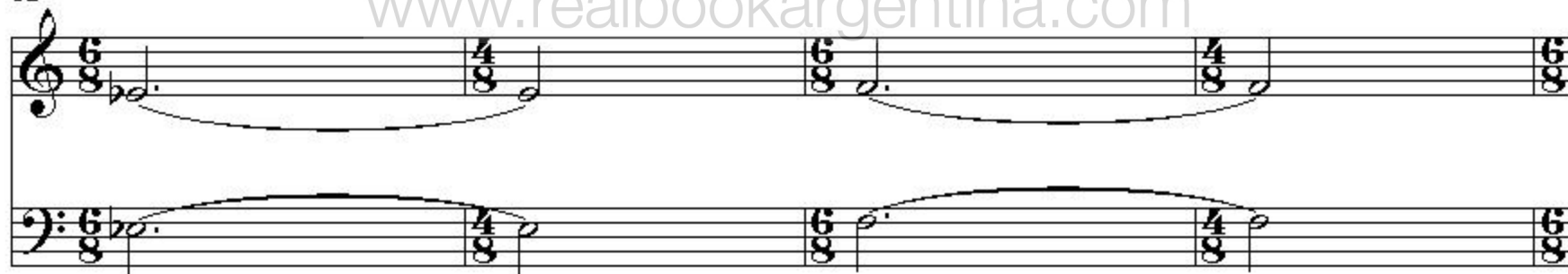
C

ON CUE PARA FINAL(x3)

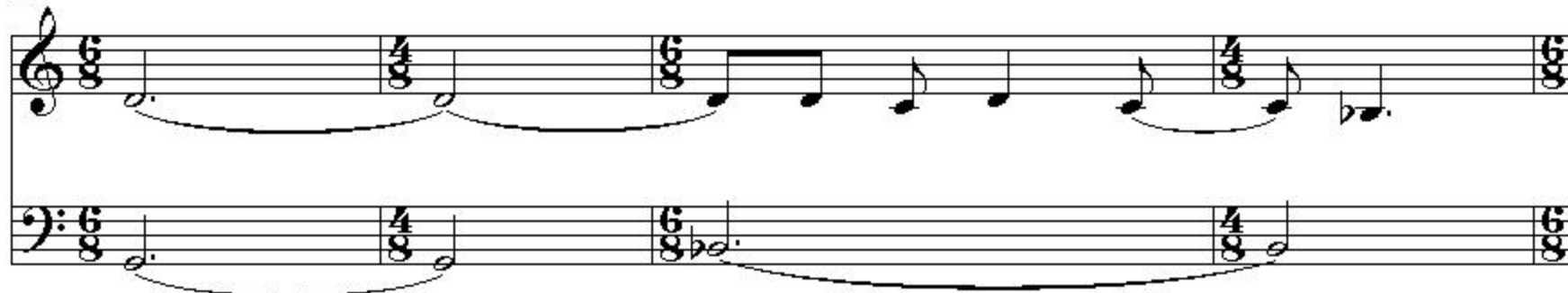
78



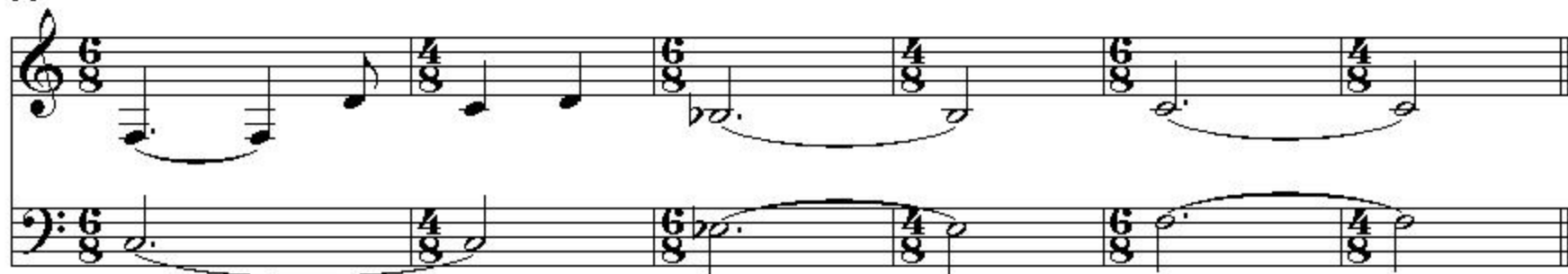
82



86



90



Solos sobre bump de C.
Melo de C x 3 (On cue) para Final.