

1-126

~~Solo de Bjo?~~
- Armas II en prova del duelo
+ Bjo en el delo de chano
+ chano se prova
+ chano se prova
1. Flapel / chano (25) (36)

COMP. 4 ARR. F.24LBERMAN

(Flugel)

Chm. 35-36

CLARINET IN B \flat ,
Flute

ALTO FLUTE
BASS CORN.
FLUTE

BASS CLARINET

ELECTRIC BASS

PIANO

DRUM SET

FLOATING PIANO SOLO

GAZDUALT2

SOLO G-7

ALT. F/078

ՀԱՆՈՏ

13 1 2 3 4

ELUCBRACIONES

2

FLGHN.

11

Bb CL.

11

A. FL.

B. CL.

E. B.

11

PNO.

11

D. S.

11

2x 044/

2x ml

2x ml

ml

Bb-7

EL7/39/

ASΔ

TEMA

www.realbookargentina.com

ELUCBRACIONES

3

FLGHN.

18

B. CL.

18

A. FL.

B. CL.

E. B.

18

PNO.

18

O. S.

18

Handwritten musical score for a woodwind quintet and piano. The score is written in G major (one sharp) and 3/4 time. It features a key signature change to E major (two sharps) at measure 18. The woodwind parts (Flute, Clarinet in Bb, Alto Flute, Bass Clarinet, Euphonium) and the piano part are all marked with a '18' at the beginning of the second system. The piano part includes handwritten chord symbols: D7, G7(b9), C7alt, F-7, F#7(b9), B7(b9), E-7. The score includes first and second endings, a solo section for the Alto Flute, and a double bar line at measure 18. The page number '18' is written in the bottom left corner.

ELUCUBRACIONES

4

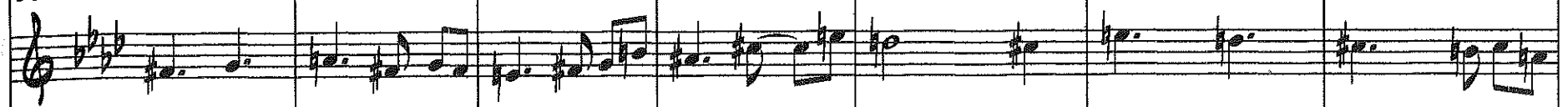
FLGHN.



B♭ CL.



A. FL.



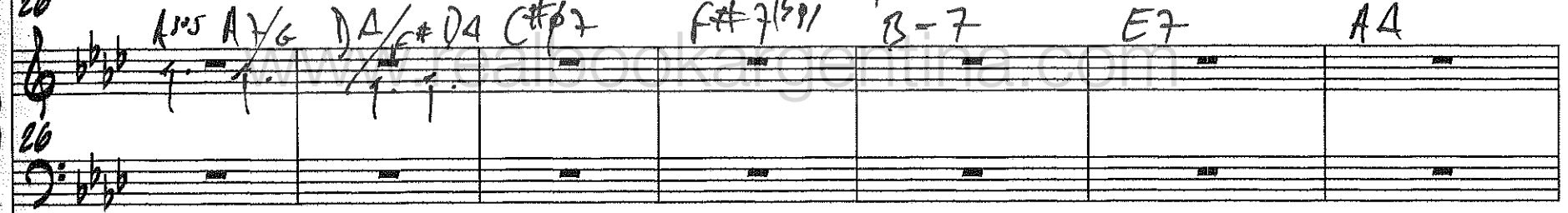
B. CL.



E. B.



PNO.



O. S.



26

(tpt. /

5

Handwritten musical score for "The Rose Tree" featuring the following instruments:

- FLGHN.
- Bb. CL.
- A. FL.
- B. CL.
- E. B.
- PNO.
- D. S.

The score includes a key signature of three flats and a common time signature. The piano part includes handwritten chord notations: 6#7, C#7(b9), F#7(b9), C7(b9), B7, C#7(b9), and F#7(b9).

33

per five

ELUCUBRACIONES

7 of 10

6

FLGHN.

39

B. CL.

39

A. FL.

B. CL.

E. B.

39

PNO.

39

FLOOR TOM

AGO-GO

D. S.

ELUCBRACIONES

Db

7

FLGHN.

45

B. CL.

45

A. FL.

B. CL.

E. B.


45


PNO.


45


D. S.


Handwritten musical score for a jazz ensemble. The score includes staves for Flg. Hn., Bb. Cl., A. Fl., B. Cl., E. B., PNO. (Piano), and D. S. (Drum Set). The key signature is Bb major (two flats). The tempo is marked "SOLO". The piano part includes handwritten chord symbols: C-7, F7(b9), D7(b9), E7(b9), A7(b9), D7(b9), G-7, G#7(b9), C#7(b9), G-7, G#7(b9), C#7(b9). The score is divided into two systems, each with first and second endings. The piano part is marked "PLUGEL SOLO" and "BASS SOLO". The drum set part is marked "D. S.".

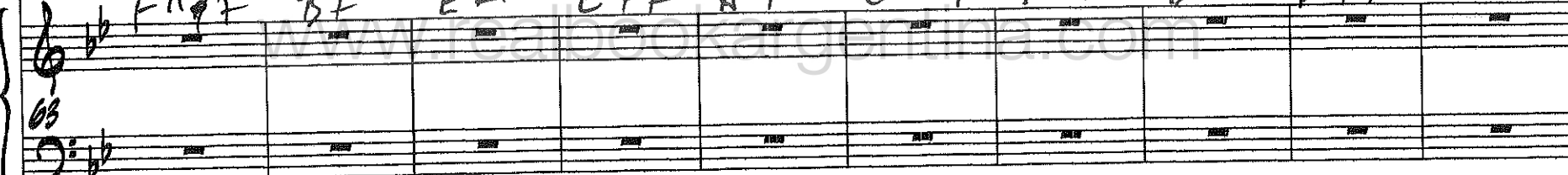
FLGHN. 

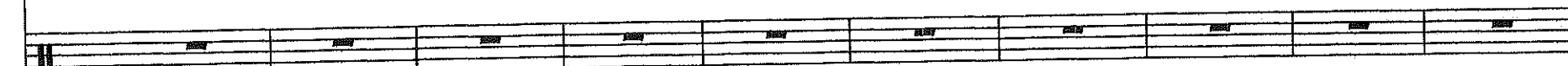
Bb CL. 

A. FL. 

B. CL. 

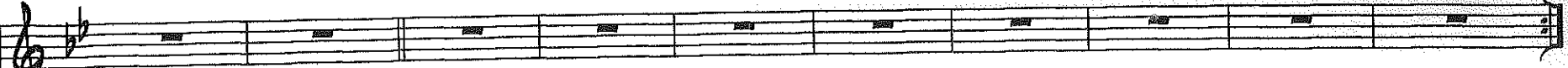
E.B. 

PNO. 

D. S. 

63

FLGHN.



Bb CL.



A. FL.



B. CL.



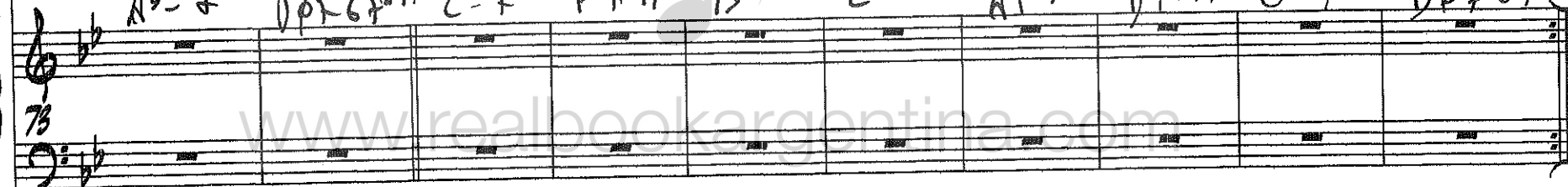
A BASS CLAR.

E.B.



Ab-2 D67 G7(b9) C-7 F7(b9) Bb4 E5A AT7p D7alt. G-7 D67 G7(b9)

PNO.



www.realbookargentina.com

D. S.



73

FLGHN.

B♭ CL.

83 (BSS. cloni)

A. FL.

B. CL.

E. B.

PNO.



FLOATING

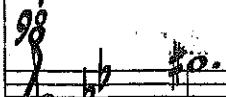
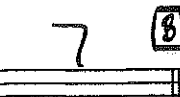

WALTZ



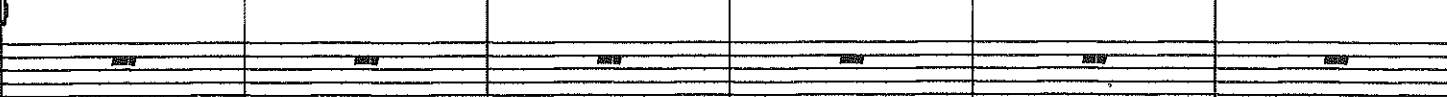
O. S.


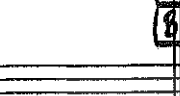

83



www.realbookargentina.com



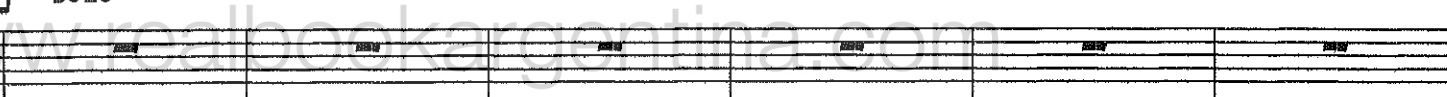


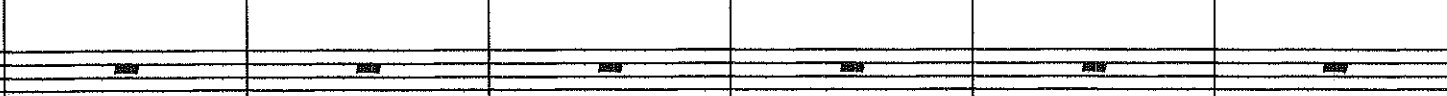
FLGHN.  




B♭ CL.  7  *declini.* 

A. FL.   

B. CL.   

E.B.  

PNO.   
  

D. S.   

98

SOLO

PIANO SOLO

ELUCBRACIONES

14

FLGHN.



B \flat CL.



A. FL.

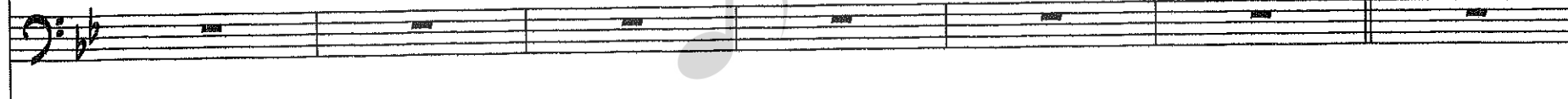
A ALTO FLUTE



B. CL.



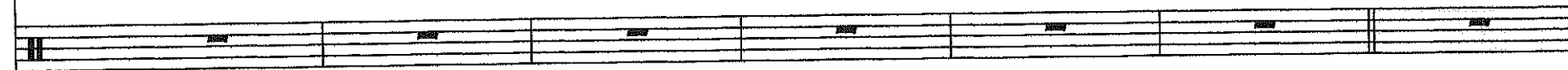
E. B.



PNO.



D. S.



105

FLGHN. *112*

B♭ CL. *112*

A. FL. *112*

B. CL. *112*

E. B. *112*

PNO. *112*

D. S. *112*

www.realbookargentina.com

ELUCBRACIONES

16

2 X ONLY

PLAY

FLGHN.

119

Bb CL.

119

A. FL.

B. CL.

E.B.

119

PNO.

119

D. S.

115

Handwritten musical score for "A Flúgel" by B. The score is for a band and includes parts for Flg.Hn., Bb.Cl., A.Fl., B.Cl., E.B., PNO. (Piano), and D.S. (Drum Set). The key signature is Bb and the time signature is 4/4. The score is divided into two systems, each with first and second endings. The first system includes a "SOLO" section for the Piano. The second system includes a "PIANO SLO" section. The score is marked with "125" at the beginning of each system. The title "A Flúgel" is written in a box at the top right.

ELUCUBRACIONES

18

STRAIGHT

FLUG

4

SOPR

4

FLUG

4

FLGHN.

CL.

A. FL.

B. CL.

E.B.

PNO.

O.S.

www.realbookargentina.com

136

Fl.

Cl.

Fl.

Cl.

E.B.

PNO.

D.S.

www.realbookargentina.com

Handwritten musical score for a chamber ensemble, featuring staves for Flute (Fl.), Clarinet (Cl.), Bassoon (B.), Piano (PNO.), and Double Bass (D. S.). The score is written in 3/4 time and includes various musical notations such as notes, rests, and dynamic markings.

The score is divided into measures by vertical bar lines. The Flute, Clarinet, and Bassoon parts are written in treble and bass clefs. The Piano part is written in grand staff (treble and bass clefs). The Double Bass part is written in bass clef. The score includes various musical notations such as notes, rests, and dynamic markings.

www.realbookargentina.com