

# Camino a Juella

Huayno ♩ = 55

Federico Gamba

*Se recomienda sentir todo "más atresillado"*

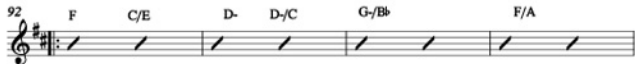
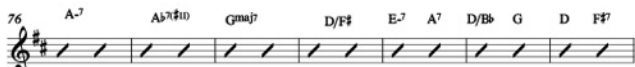
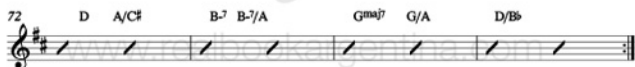
Intro



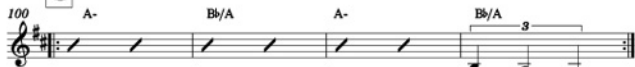
**A**

En la primera repetición la armonía es un pedal de D





**C** Caporal  $\text{♩} = 80$



104 A- B $\flat$ /A A- B $\flat$ /A x4

Huayno ♩ = 60

108 A- Bb/A A- Bb/A

112 A- Bb/A A- Bb/A

116 A- Bb/A A- Bb/A



120 A-7 A♭7(11) Gmaj7 D/F#

124 E<sup>7</sup> A<sup>7</sup> 3 D/Bb G D F#<sup>7</sup> B-

128 D A/C# 3 B-7 B-7/A Gmaj7 D/A

132 D A/C# 3 B-7 B-7/A Gmaj7 G/A D/Bb

136 A-7 A<sup>b</sup>7(♯11) Gmaj7 D/F<sup>♯</sup>

140  $G/F$   $G^{*11}$   $A/G$   $G^{*m7(b9)}$   $G/A$   $F^{*11}$   $D/Bb$

144 D G D F#7(b13) B-7 A-11 B-11 C#9 Bbmaj9 G/A F#-11 D/Bb D

call.